



## **Addendum No. 2**

---

The Regional Metropolitan Transit Authority of Omaha d/b/a Metro

### **Bus Wash System**

Specification No. 05-25

Date Issued: May 5, 2025.

To: All Interested Parties

This Addendum forms a part of the Request for Proposals (RFP) dated **May 5, 2025**. The Proposer shall acknowledge receipt of this Addendum on Exhibit "C" *Acknowledgement of Addendum* provided in the RFP.

**Failure to acknowledge receipt may subject the Proposer to disqualification.**

This Addendum consists of the following:

- Metro Vehicle Wash System Renovations 2000 - Drawings


*Total Addendum Pages: Sixteen (16) Including Cover*

DO NOT SCALE DRAWING

**NOTE:** THIS DRAWING IN DESIGN IS THE PROPERTY OF THE ROSS AND WHITE COMPANY AND MUST NOT BE COPIED OR USED EITHER DIRECTLY OR INDIRECTLY FOR ANY WORK OTHER THAN THAT OF THE ROSS AND WHITE COMPANY WITHOUT SAID COMPANY'S EXPRESSED PERMISSION. ALL RIGHTS OF INVENTION OR DESIGN ARE RESERVED.

REV	REVISION	DATE	REV	REVISION	DATE
E			A		
F			B		
G			C		
H			D		
I					
J					
K					

		1080 ALBANY RD. SUITE 100 ALBANY, NY 12206 TEL: 518/486-8800 FAX: 518/486-8801	
CONTRACT 9928A			
APPROVED: _____		_____	





```

LAYOUT OF EQUIPMENT.....9928A-1
WASH WATER RECLAIM SYSTEM.....9928A-2
PROGRAMMABLE CONTROLLER CONNECTION DIAGRAM.....9928A-3
WASHER CONTROL PANEL ASSEMBLY.....9928A-3A
FIELD CONDUIT SCHEMATIC.....9928A-3B
AIR CONTROL PANEL ASSEMBLY.....9928A-4
CHEMICAL ARCH ASSEMBLY.....9928A-5
FRONT-LOWER BODY AND WHEEL SPRAY UNIT.....9928A-6
BAR 1055-DM BRUSH MACHINE ASSEMBLY.....9928A-7
BAR 1055-DM BRUSH MACHINE PIPING SCHEMATIC.....9928A-7A
BAR 1055-DM BRUSH MACHINE WIRING SCHEMATIC.....9928A-7B
BAR 1055-DM BRUSH MACHINE LIMIT/HIP SWITCH ASSEMBLY.....9928A-7C
RINSE TOWER MODIFICATIONS.....9928A-8
PRESENCE DETECTOR SYSTEM.....9928A-9

```

**NOTE:** THIS DRAWING IN DESIGN IS THE PROPERTY OF THE ROSS AND WHITE COMPANY AND MUST NOT BE COPIED OR USED EITHER DIRECTLY OR INDIRECTLY FOR ANY WORK OTHER THAN THAT OF THE ROSS AND WHITE COMPANY WITHOUT SAID COMPANY'S EXPRESSED PERMISSION. ALL RIGHTS OF INVENTION OR DESIGN ARE RESERVED.

REV	REVISION	DATE	REV	REVISION	DATE
E	A				
F	B				
G	C				
H					
I	D				
J					
K					


  

DATE PLOTTED:	DATE CHECKED BY:	DATE ORDERED:
1/4/99		

DESIGNED BY:	DATE DESIGNED:	APPROVED:
JPH	12/13/99	



**ROSS**  
WHITE COMPANY

1080 ALBERTA DRIVE, SUITE 200  
CHATT. LITHOGRAPH CO. INC.  
PO BOX 148277  
MEMPHIS, TN 38114-2580

**LAYOUT OF EQUIPMENT  
FOR METRO AREA TRANSIT**

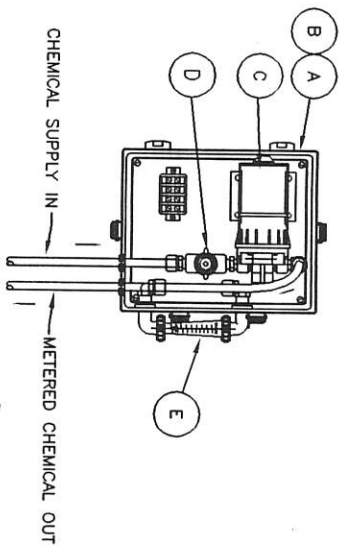
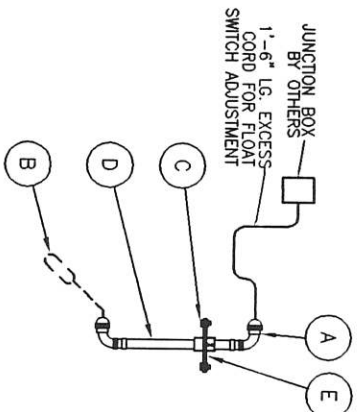
9928A-1	NE
---------	----



LIST OF EQUIPMENT BY ROSS & WHITE CO.

ITEM	QUAN.	PART NO.	DESCRIPTION
200	3	PAC-3095-3	PUMP 200 GPM @ 100 PSI, 20 H.P. CLOSE COUPLED
201	3	FLD-4106	FLOTT VALVE 2 1/2"
202	3	FLD-4035	CHECK VALVE 2 1/2"
203	3	FAB-9815A-2C	BARREL STRAINER
204	3	BAN-2004/200D	FEMALE ADAPTOR AND COUPLER 2"
205	2	PPS-P80B212S2T	BUSHING 2 1/2" X 2" NPT PVC SCHED. 80
206	3	PVC-180P212	PVC SUCTION LINE 2 1/2", SCHED. 80
207	12	PAR-156BP-8-6	FITTING STRAIGHT 1/2" TUBE X 3/8" NPT
208	50'	HDS-12PVCRC	HOSE 1/2" CLEAR
209	3	MAR-G-27433	PRESSURE GAUGE 0-160 PSIG
210	3	MCD-FS8-N	FLOW SWITCH 1" NPT 120V
212	1	ZZZ-90-E1S	R&W SINGLE FLOTT SWITCH ASSEMBLY
A	1	T&B-2681	CORD GRIP 1/2" PVC 90°
B	1	PEA-73614	SWITCH N.C. MERCURY FLOTT
C	4	FAS-HCS12X114A	BOLT ASSEMBLY 1/2" X 1 1/4" LG. W/F. W., L. W. & NUT
D	7'	CDL-FVCB0PE34	PIPE PVC 3/4" SCHED. 80
E	1	ZZZ-69-N	FLOTT SWITCH MTG. PLATE - SINGLE
213	1	NDR-40148	500 GALLON POLYETHYLENE TANK 48" X 72" HIGH
214	3	ZZZ-53-5	CHEMICAL METERING SYSTEM ASSEMBLY
A	1	HOF-A14107JFGOR	ENCLOSURE 14" X 10" 5" FIBERGLASS NEMA 4X
B	1	HOF-A12P10	ENCLOSURE SUB-PLATE
C	1	FLD-2100-032	INJECTOR PUMP 115VAC
D	1	HAY-NV1003TT	NEEDLE VALVE 3/8" PVC
E	1	B&W-CF44250LHE6	FLOW METER .025-.25 GPM
215	6	PAR-E64	TUBING 3/8" D. D. POLYETHYLENE TUBING
216	6	PAR-N4HPN6	HEX NIPPLE 1/2" X 3/8" REDUCING, NYLON
217	6	JAC-0500-055	FITTING STRAIGHT 3/8" TUBE X 3/8" M. NPT
218	3	PVC-BV12	BALL VALVE 1/2" DNMI
220	1	PPS-P/CTUBV2	BALL VALVE 1 1/2" TRU-UNION
221	3	PPS-P30B2S12T	BUSHING 2" X 1 1/2" NPT PVC
222	3	PPS-P/C80N12CL	1/2" PVC CLOSE NIPPLE
223	6	FLD-5356	CHECK VALVE 3/8" PLASTIC
224	1	NDR-61405	BULKHEAD FITTING 2"
225	12	PAR-219P-12-6	BUSHING 3/4" X 3/8" REDUCING
226	3	CDL-PVC80PE3	3" PVC UNDERFLOW DISCHARGE PIPE 3'-6" LG.

QUANTITIES SHOWN FOR 3-LANE ASSEMBLY



DETAIL - "A" -  
FLOAT SWITCH ASSEMBLY

DETAIL - "B" -  
DETERGENT METERING SYSTEM ASSEMBLY

212

214

216

217

218

219

220

221

222

223

224

225

226

227

228

229

230

231

232

233

234

235

236

237

238

239

240

241

242

243

244

245

246

247

248

249

250

251

252

253

254

255

256

257

258

259

260

261

262

263

264

265

266

267

268

269

270

271

272

273

274

275

276

277

278

279

280

281

282

283

284

285

286

287

288

289

290

291

292

293

294

295

296

297

298

299

300

301

302

303

304

305

306

307

308

309

310

311

312

313

314

315

316

317

318

319

320

321

322

323

324

325

326

327

328

329

330

331

332

333

334

335

336

337

338

339

340

341

342

343

344

345

346

347

348

349

350

351

352

353

354

355

356

357

358

359

360

361

362

363

364

365

366

367

368

369

370

371

372

373

374

375

376

377

378

379

380

381

382

383

384

385

386

387

388

389

390

391

392

393

394

395

396

397

398

399

400

401

402

403

404

405

406

407

408

409

410

411

412

413

414

415

416

417

418

419

420

421

422

423

424

425

426

427

428

429

430

431

432

433

434

435

436

437

438

439

440

441

442

443

444

445

446

447

448

449

450

451

452

453

454

455

456

457

458

459

460

461

462

463

464

465

466

467

468

469

470

471

472

473

474

475

476

477

478

479

480

481

482

483

484

485

486

487

488

489

490

491

492

493

494

495

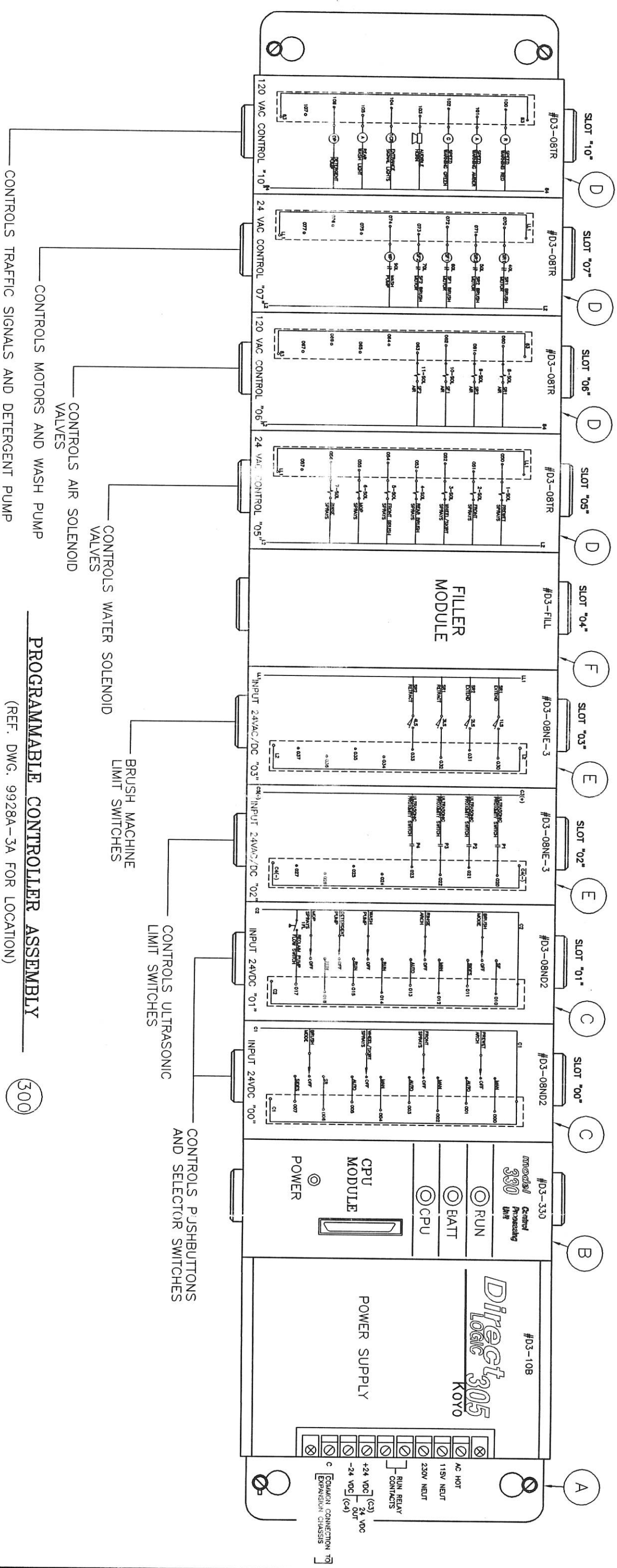
496

497



LIST OF EQUIPMENT BY ROSS & WHITE CO.		
ITEM	QUAN.	PART NO. DESCRIPTION
300	1	PLC-9928A-3 PROGRAMMABLE CONTROLLER ASSEMBLY
A	1	PLC-D3-10B CONTROLLER RACK W/ POWER SUPPLY 10-SLOT
B	1	PLC-D3-330 CONTROL PROCESSING UNIT
C	2	PLC-D3-08ND2 INPUT MODULE 24 VDC
D	4	PLC-D3-08TR OUTPUT MODULE
E	2	PLC-D3-08NE-3 INPUT MODULE 24VAC/DC
F	1	PLC-D3-FILL FILLER MODULE

QUANTITIES SHOWN FOR 1-LANE, 3-LANES REQUIRED



DO NOT SCALE DRAWING			
REV.	REVISION	DATE	REV.
A			
B			
C			
D			
E			
F			
G			
H			
I			
J			
K			

NOTE: THIS DRAWING IN DESIGN IS THE PROPERTY OF THE ROSS AND WHITE COMPANY AND MUST NOT BE COPIED OR USED EITHER WHOLLY OR IN PART FOR ANY PROJECT OTHER THAN THAT OF THE ROSS AND WHITE COMPANY WITHOUT SAID COMPANY'S EXPRESSED DESIGN RESERVATIONS.

1090 ALEXANDER COURT  
SARASOTA, FL 34230  
TEL: (813) 510-3880  
FAX: (813) 510-3885

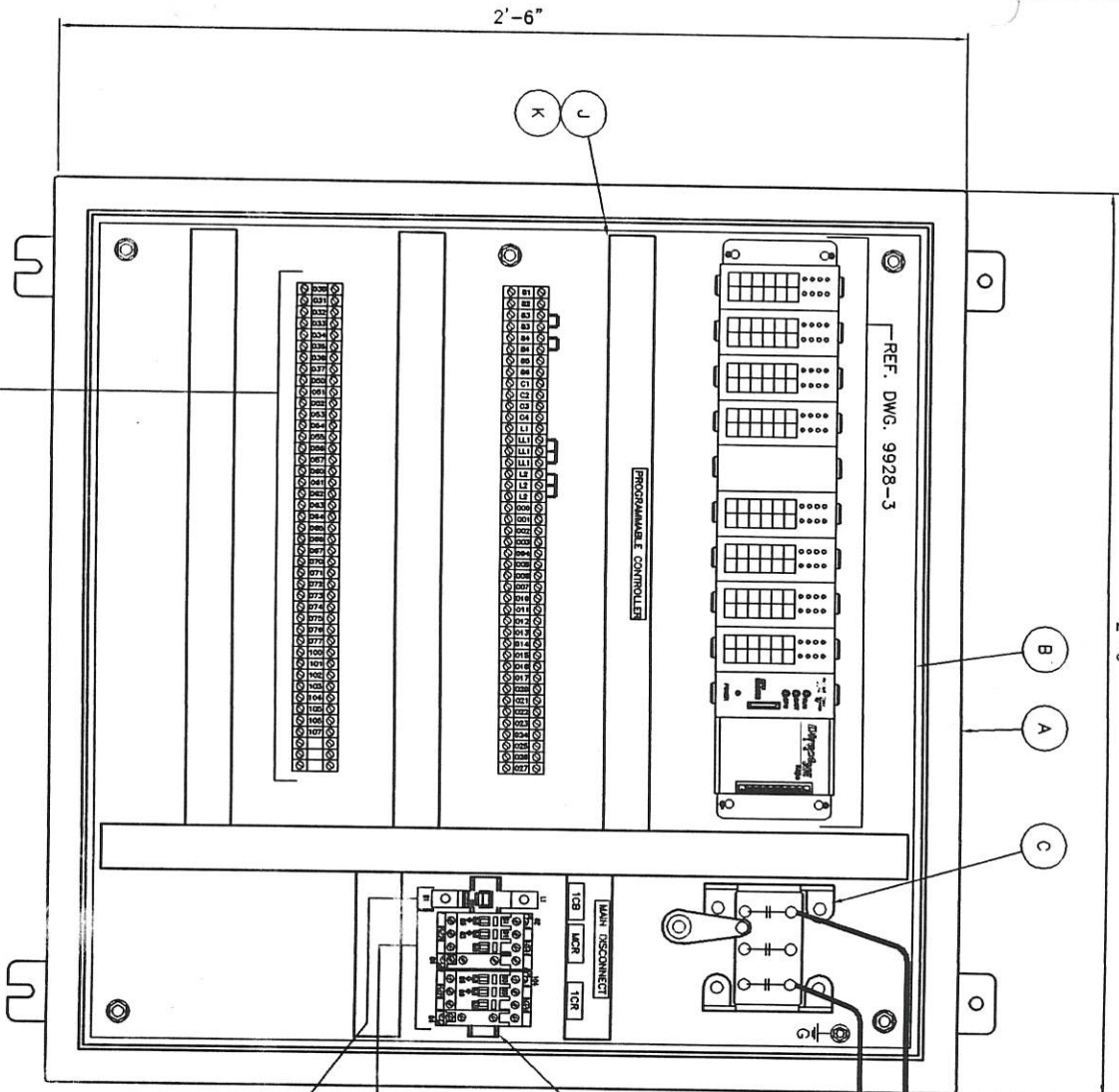
ROSS & WHITE COMPANY  
PROGRAMMABLE CONTROLLER CONNECTION DIAGRAM  
FOR METRO AREA TRANSIT

DATE: 12/13/99  
SCALE: NONE  
APPROVED: OMAHA  
9928A-3

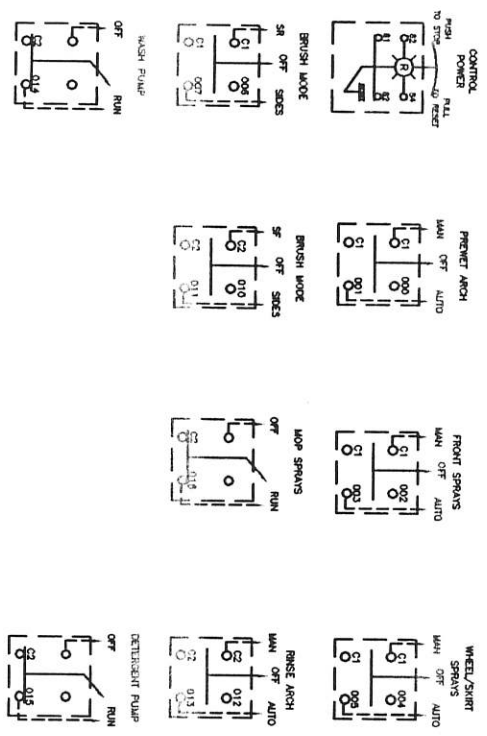


CAUTION: DO NOT RUN CONDUIT INTO TOP OF ENCLOSURE

2'-6"

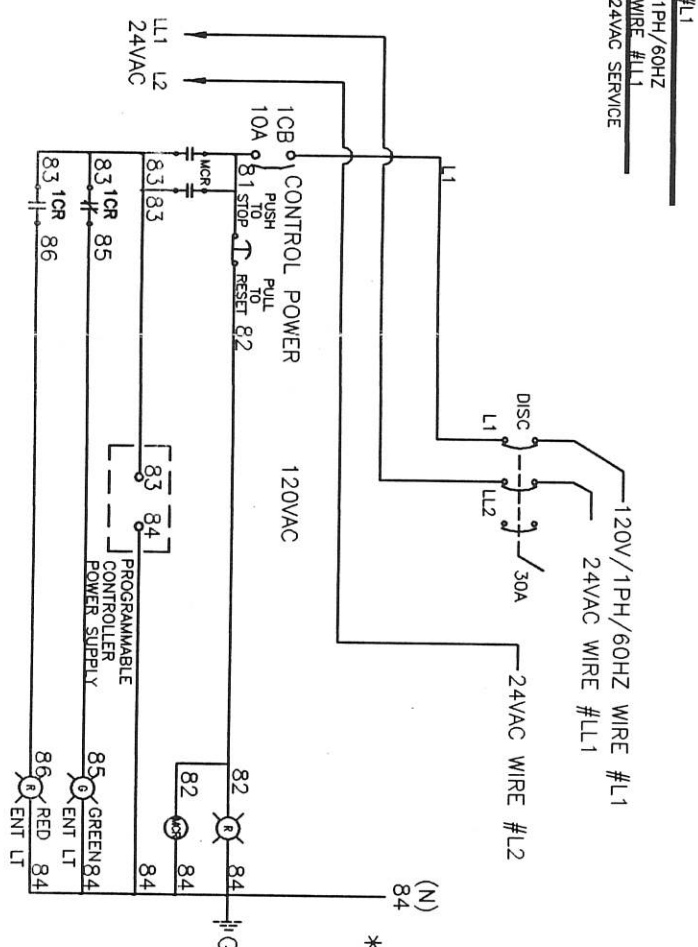


WASHER CONTROL PANEL ASSEMBLY 303



CONNECTION DIAGRAM

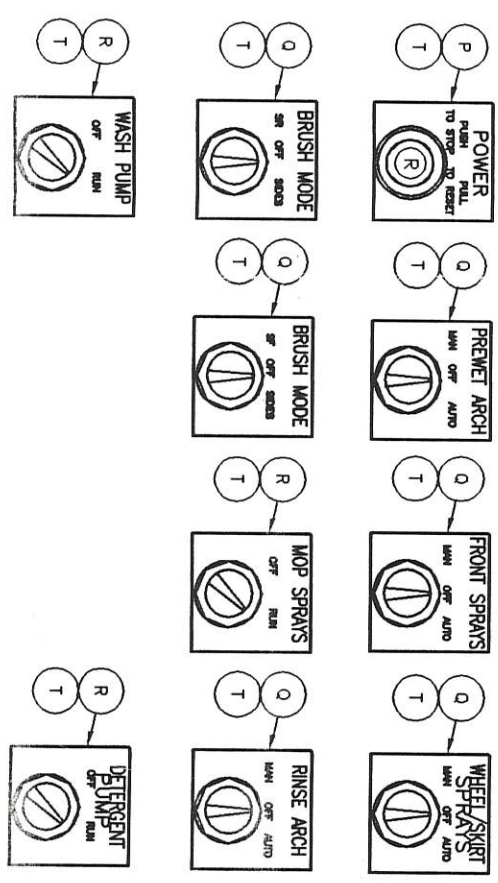
PUSHBUTTON & SELECTOR SWITCHES



ELEMENTARY DIAGRAM

LIST OF EQUIPMENT BY ROSS & WHITE CO.		
ITEM	QUAN.	PART NO.
303	1	R&W-9928-WCP
A	1	HDF-A30H30BLP
B	1	HDF-A30P30
C	1	AB-149R-N30
D	1	CH-QCR1010
E	2	AB-700-CF220D
F	83	AB-1492-CA1
G	5	AB-1492-N16
H	10	AB-1492-N2
J	12	PAN-F1.5X3H6
K	12	PAN-C1-1-1/2WH6
L	6	AB-1492-N3
M	1	AB-199DR1
N	2	AB-1492-N1
P	1	GECR104PBT11R5C
Q	6	GEGR104PSC34B91
R	3	GEGR104PSC21B91
S	1	LEG-5X8BCL
T	10	LEG-25X25B

QUANTITIES SHOWN FOR (1) LANE, (3) LANES REQUIRED  
\*\*- LOCATED ON CONTROL PANEL DOOR



PUSHBUTTON & SELECTOR SWITCHES  
(PREWIRED IN CONTROL PANEL DOOR)

REV.	REVISION	DATE	REV.	REVISION	DATE
A	GENERAL	12/29/99			
B					
C					
D					
E					
F					
G					
H					
I					
J					
K					

ROSS & WHITE COMPANY  
1050 ALEXANDER COURT  
FARMINGTON, CT 06030  
PHONE (860) 376-1500  
FAX (860) 376-1500

WASHER CONTROL PANEL ASSEMBLY  
FOR METRO AREA TRANSIT

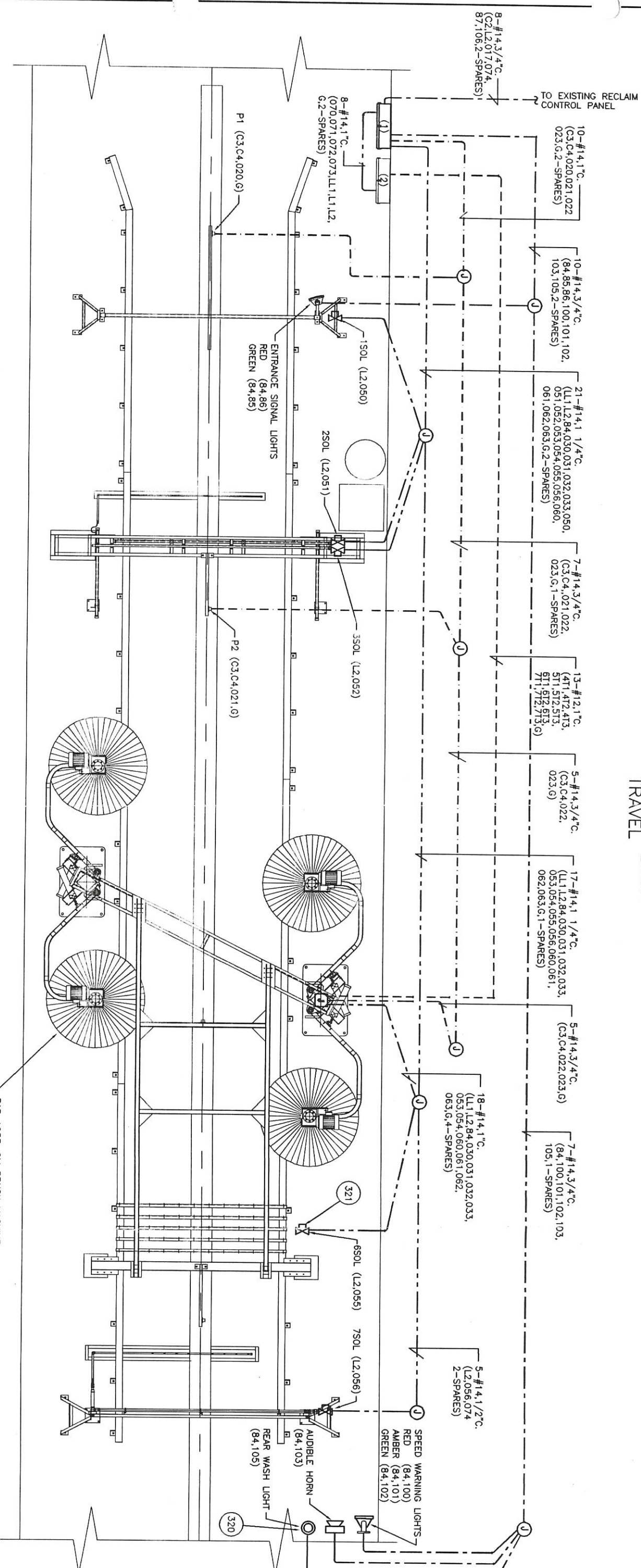
OMAHA  
DATE: 12/29/99  
SCALE: 4"=1'-0"  
APPROVED: [Signature]  
CHECKED BY: [Signature]

9928A-3A

DO NOT SCALE DRAWING  
NOTE: THIS DRAWING IN DESIGN IS THE PROPERTY OF THE ROSS AND WHITE COMPANY. IT IS TO BE USED FOR THE DESIGN OF THE WASHING MACHINE ONLY. IT IS NOT TO BE USED FOR ANY OTHER PURPOSE. THE ROSS AND WHITE COMPANY ASSUMES NO LIABILITY FOR ANY DAMAGE OR LOSS OF PROFITS OR REVENUE, OR ANY OTHER CONSEQUENCES, ARISING OUT OF THE USE OF THIS DRAWING. THE ROSS AND WHITE COMPANY ASSUMES NO LIABILITY FOR ANY DAMAGE OR LOSS OF PROFITS OR REVENUE, OR ANY OTHER CONSEQUENCES, ARISING OUT OF THE USE OF THIS DRAWING.



## VEHICLE TRAVEL



PLAN VIEW

NOTE: CONDUIT RUNS ARE SHOWN DIAGRAMMATIC. REUSE EXISTING CONDUIT BETWEEN PANELS AND EQUIPMENT AND EXTEND AS REQUIRED TO MAKE CONNECTIONS TO NEW AND EXISTING EQUIPMENT.

## LEGEND

- 240V FIELD CONDUIT  
 -1Ø 24V FIELD CONDUIT  
 -1Ø 120V FIELD CONDUIT  
 -3Ø FIELD CONDUIT  
 -FIELD JUNCTION BOX  
 -FACTORY JUNCTION BOX  
 -SOLENOID VALVE

## DO NOT SCALE DRAWING

NOTE: THIS DRAWING IN DESIGN IS THE PROPERTY OF THE ROSS AND WHITE COMPANY AND MUST NOT BE COPIED OR USED EITHER DIRECTLY OR INDIRECTLY FOR ANY WORK OTHER THAN THAT OF THE ROSS AND WHITE COMPANY WITHOUT SAID COMPANY'S EXPRESSED PERMISSION. ALL RIGHTS OF INVENTION OR DESIGN ARE RESERVED.

LIST OF EQUIPMENT BY ROSS & WHITE CO.		
ITEM	QUAN.	PART NO. DESCRIPTION
320	1	FED-225-A-120 ROTATING WARNING LIGHT, AMBER
321	1	1MP-CEV150 VALVE SOLENOID 1 1/2", CEV, 115VAC



QUANTITIES SHOWN FOR (1) WASH LANE, (3) LANES REQUIRED

REV	REVISION	DATE	REV	REVISION	DATE
E			A		
F			B		
G			C		
H			D		
I					
J					
K					

DRAWN BY: JPH DATE PLOTTED: 12/14/93 SCALE: 3/8"=1'-0" CHECKED BY:	APPROVED: OMAHA  FIELD CONDUIT SCHEMATIC FOR METRO AREA TRANSIT
---	--

 18901 ALLENBURG COUNTY ROUTE 1 P.O. BOX 100730 JEFFERSON, NE 68131-0730 PHONE 402/333-0380 FAX 402/333-0383	
---	---

9928A-3	N
---------	---

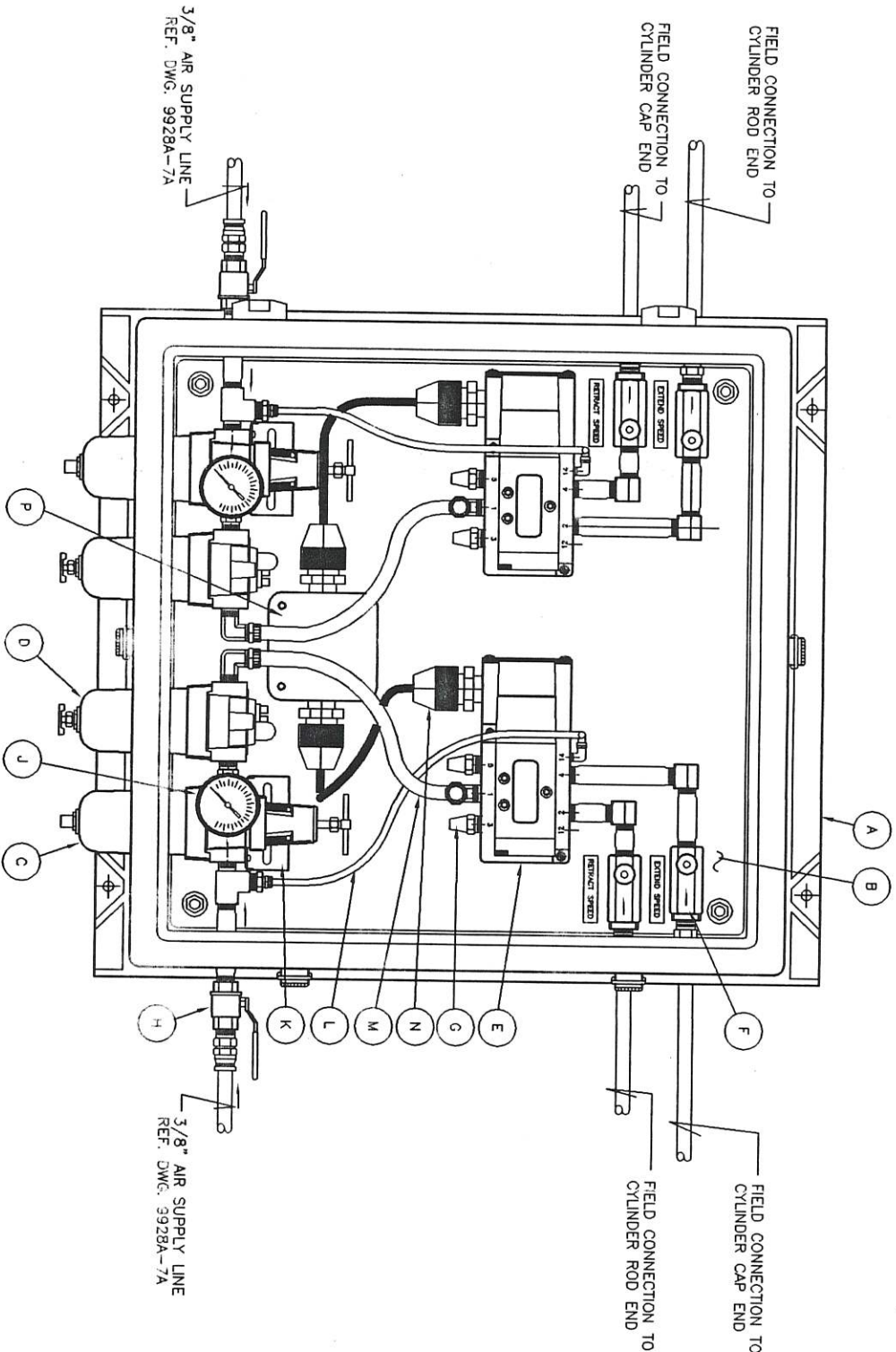
4 | Z



LIST OF EQUIPMENT BY ROSS & WHITE CO.

ITEM	QUAN.	PART NO.	DESCRIPTION
400	2	ZZZ-ACP24X24-38	AIR CONTROL PANEL
A	1	HDF-A24H2408GQR	ENCLOSURE NEMA 4X FIBERGLASS 24" X 24" X 8"
B	1	HDF-A24P24	ENCLOSURE SUB-PANEL
C	2	PAR-06E21A13A	FILTER/REGULATOR 3/8" 0-150 P.S.I.
D	2	PAR-16L21B	LUBRICATOR 3/8" MICROMIST, 0-150 PSI
E	2	PAR-F5115LJC23	AIR SOLENOID VALVE 3/8" NPT 4-WAY 120VAC COIL
F	4	PAR-PF600B	FLOW CONTROL VALVE 3/8" BRASS
G	4	PAR-CFP-3	EXHAUST MUFFLER 3/8" BRASS
H	2	APD-40102-01	BALL VALVE 3/8" BRASS
J	2	MAR-G-27435	GAUGE 0-160 P.S.I. 1/2" 1/2" BACK MOUNT
K	2	PAR-PS-407P	MOUNTING BRACKET D6E21 SERIES
L	2	PAR-NW-2-016	TUBING NYLON, 1/8" I.D., CLEAR
M	2	PAR-E86	TUBING POLY FLOW 1/2", CLEAR
N	4	T&B-2672	CORD GRIP, 1/2" NPT, .25 - .40
P	1	2AC-4X4X2PVCJB	JUNCTION BOX 9600 4"X4"X2", PVC
401	4	PAR-4C02A14C18	4"x18" AIR CYLINDER
402	48	FAS-HCS38FX112	3/8-24X1-1/2" L. HEX HD. BOLT W/F/W, LV & NUTS
403	8	SEA-SFT-16	AIR CYLINDER FLANGE BEARING
404	4	FAS-3416Z	3/4-16 COUPLING NUT
405	4	4UR-CH-12Z	3/4-16 MALE ROD END BEARING - 3/4" BORE
406	4	PAR-68369	PIVOT PINS
407	4	FLU-CN-133-05	CLEVIS BRACKET
408	4	ZZZ-76-A	AIR CYLINDER BACK-UP PLATE
409	16	FAS-HCS18FX134	1/2-20X 1-3/4" BOLTS W/ FW, LV & NUTS
410	4	ARR-E192L	RELIEF VALVE
411	16	ZZZ-UPS-1055	BEARING RETAINER PLATE

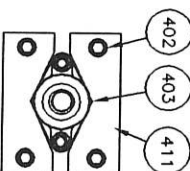
QUANTITIES SHOWN FOR (1) WASH LANE, (3) LANES REQUIRED



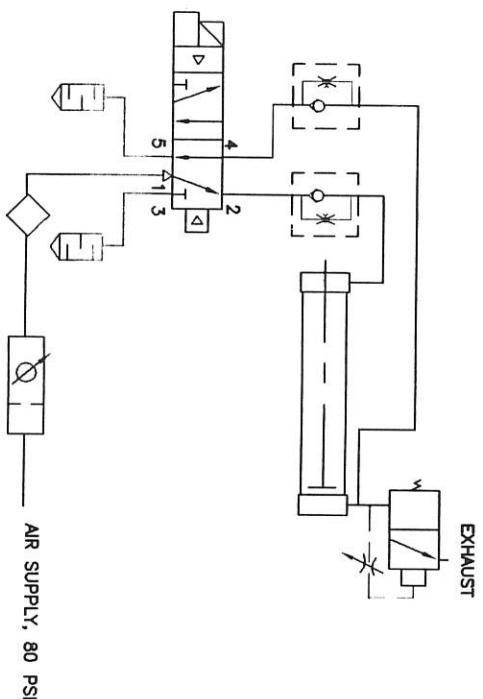
AIR CONTROL PANEL ASSEMBLY

400

NOTE: BEARING RETAINER PLATES TO BE PLACED AGAINST BEARING TO RESTRICT ANY MOVEMENT.

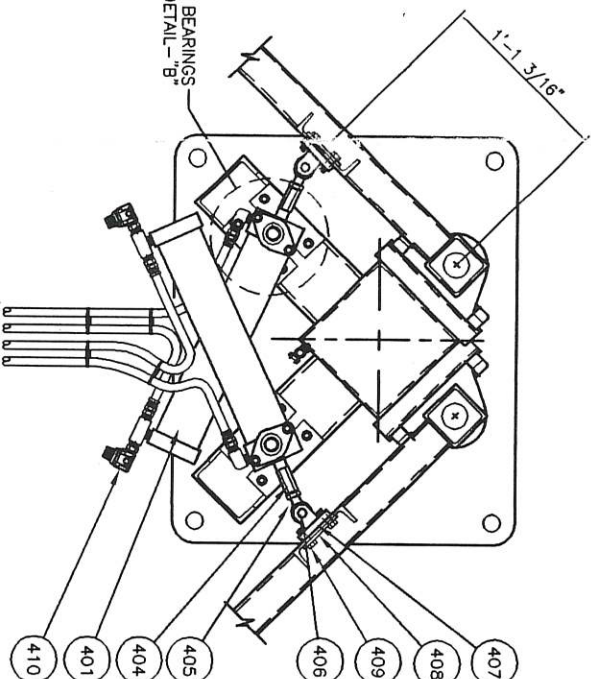


DETAIL-"B"  
CYLINDER PIVOT  
BEARING MOUNTING



PNEUMATIC SCHEMATIC

CYLINDER TRUNNION BEARINGS  
REF. DETAIL-"B"



DETAIL-"A"  
TYPICAL CYLINDER ARRANGEMENT  
(TYPICAL)

CYLINDER HOSES TO  
AIR CONTROL PANEL  
REF. DWG. 9928A-7A

DO NOT SCALE DRAWING

NOTE: THIS DRAWING IN DESIGN IS THE PROPERTY OF THE ROSS AND WHITE COMPANY AND MUST NOT BE COPIED OR USED EITHER WHOLLY OR IN PART, FOR ANY WORK OTHER THAN THAT AUTHORIZED BY THE COMPANY WITHOUT SAID COMPANY'S EXPRESSED PERMISSION. ALL RIGHTS OF INVENTION OR DESIGN ARE RESERVED.

REV	REVISION	DATE	REV	REVISION	DATE
E			A		
F			B		
G			C		
H			D		
I					
J					
K					

1090 ALEXANDER COURT  
SARASOTA, FL 34237  
941-555-5800

**ROSS**  
WHITE COMPANY

AIR CONTROL PANEL ASSEMBLY  
FOR METRO AREA TRANSIT

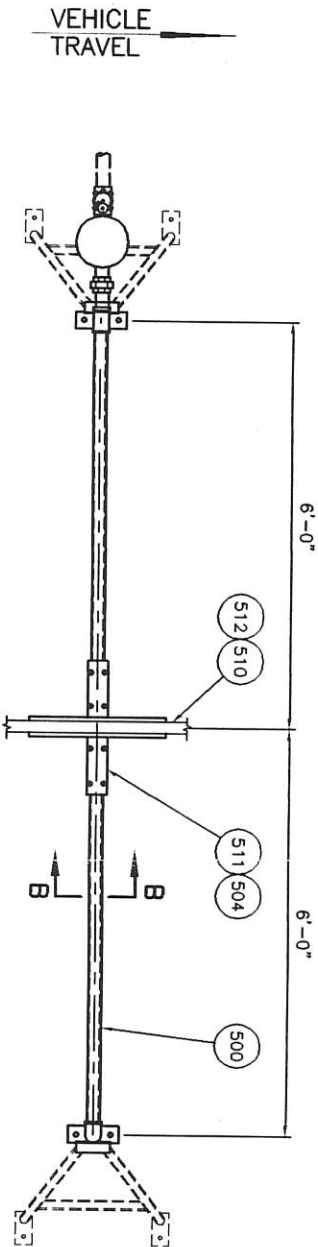
DATE: 12/15/99  
SCALE: NONE  
APPROVED: OMAHA  
DATE CHECKED: 9928A-4



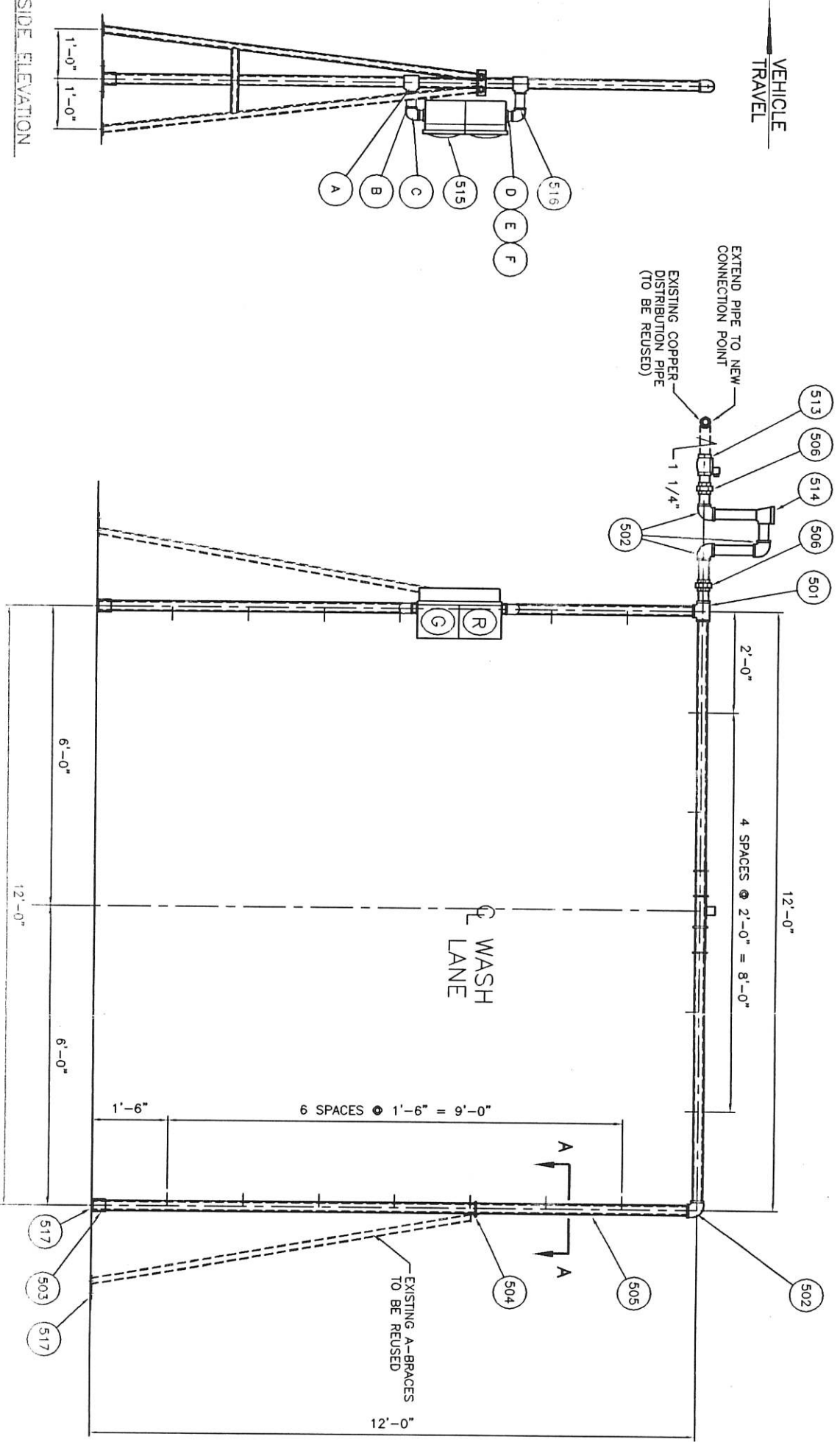
LIST OF EQUIPMENT BY ROSS & WHITE CO.

ITEM	QUAN.	PART NO.	DESCRIPTION
500	1	CCL-GTC114	CHEMICAL ARCH TOP HEADER 1 1/4" GALV.
501	1	CCL-GMT114	TEE 1 1/4", GALV. SCHED. 40
502	4	CCL-GM90114	ELBOW 1 1/4", GALV. SCHED. 40
503	2	FAB-87-E2	BASE PLATE 1 1/4" NPT, GALV.
504	6	FAS-UB114	U-BOLT 1 1/4", w/PLATE & NUTS
505	2	CCL-GTC114	CHEMICAL ARCH SIDE SPRAY PIPE 1-1/4" GALV.
506	2	CCL-GMU114	UNION 1-1/4", 150# MNL. GALV.
507	19	SPR-36275-1/4	ADJUSTABLE BALL FITTING 1/4"
508	19	SPR-1/4AB5	VALVE CHECK 1/4", AB TYPE, 5#
509	19	SPR-H1/4UB015	NOZZLE 1/4UB015, BRASS
510	1	FAB-94-6F	DANGLE SWITCH TUBE
511	1	FAB-96-E	DANGLE SWITCH MOUNTING BRACKET
512	4	FAS-HCS12X3A	BOLT HEX. 1/2"x3" LG. w/FW, LV & NUT
513	1	IMP-CEV125	VALVE 1 1/4" SLENDID, CEV, 110 VAC
514	1	WAT-288A114	VACUUM BREAKER 1 1/4", BRASS
515	1	MTS-EP216PA	TRAFFIC SIGNAL 8" RED/GREEN
516	1	RV-TCS-WB-114	TRAFFIC SIGNAL PIPE MOUNT BRACKET ASS'Y
A	2	HDL-HS-125	TEE 1 1/4" P. S. SPEED RAIL
B	2	CCL-GN1149	PIPE NIPPLE 1 1/4" x 9' LG. GALV
C	2	TSH-0174	ELBOW SERATED ALUMINUM
D	2	TSH-0571	NIPPLE LOCK ALUMINUM
E	2	TSH-0533	GASKET METAL FOR MTS SIGNAL LIGHTS
F	2	TSH-0531	GASKET
517	8	RAV-7424	1/2" DIA. X 5 1/2" LG. RAIL STUD

\* - ITEMS TO BE HOT DIPPED GALVANIZED AFTER FABRICATION  
QUANTITIES SHOWN FOR (1) WASH LANE, (3) LANES REQUIRED

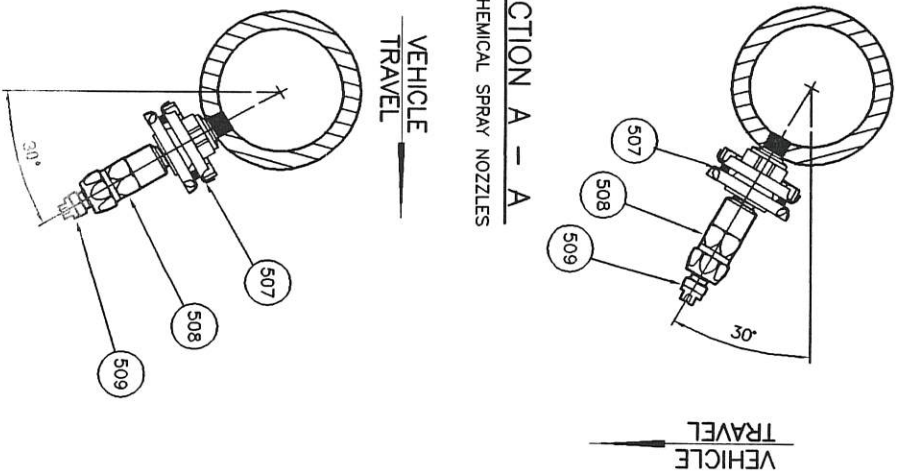


PLAN VIEW

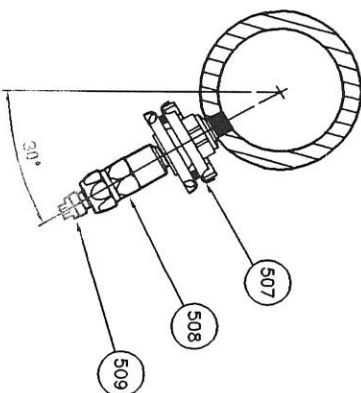


ELEVATION

SECTION A - A  
SIDE CHEMICAL SPRAY NOZZLES



SECTION B - B  
TOP CHEMICAL SPRAY NOZZLES



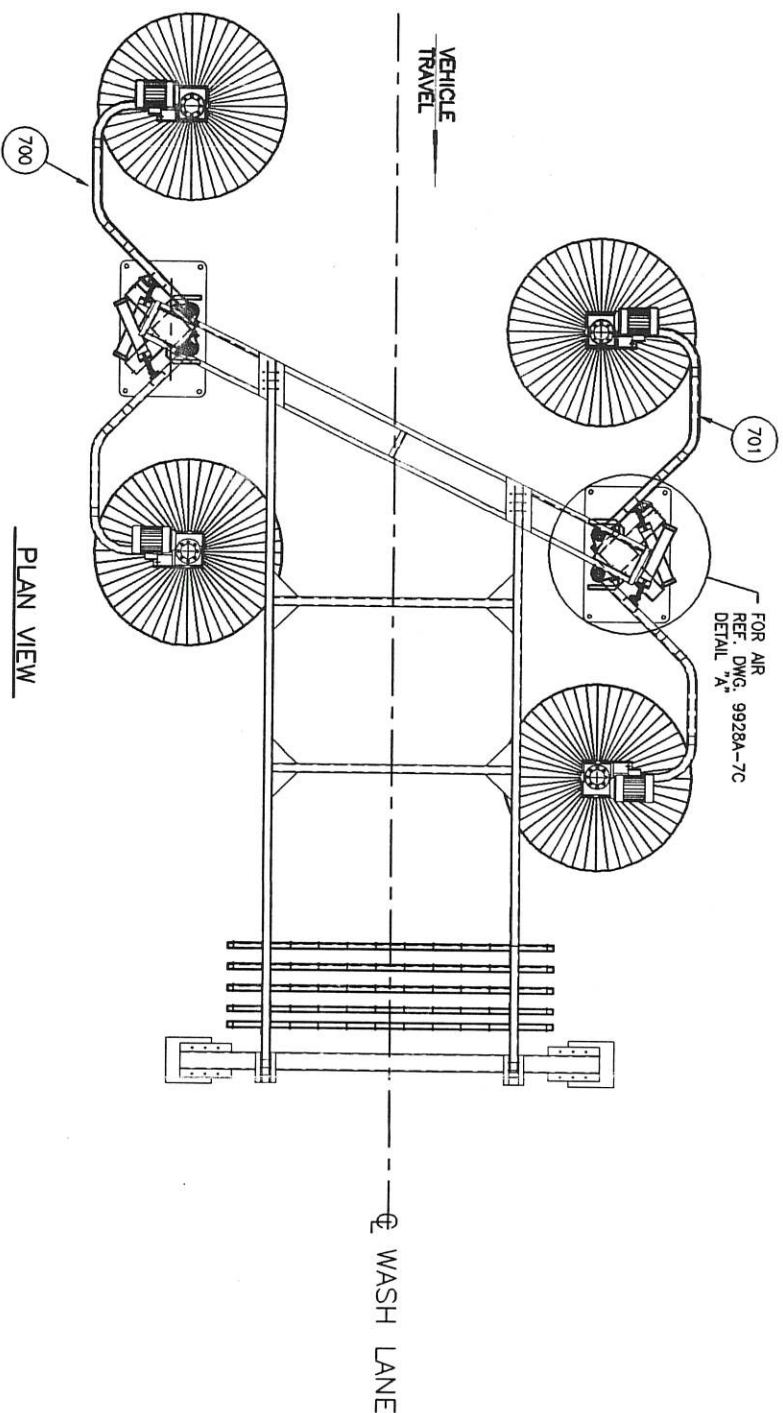
DO NOT SCALE DRAWING  
NOTE: THIS DRAWING IN DESIGN IS THE PROPERTY OF THE ROSS AND WHITE COMPANY AND MUST NOT BE COPIED OR USED EITHER DIRECTLY OR INDIRECTLY FOR ANY WORK WITHOUT THE WRITTEN PERMISSION OF THE ROSS AND WHITE COMPANY. ALL RIGHTS OF INVENTION OR DESIGN ARE RESERVED.

REV	REVISION	DATE	REV	REVISION	DATE
A			A		
B			B		
C			C		
D			D		
E			E		
F			F		
G			G		
H			H		
I			I		
J			J		
K			K		

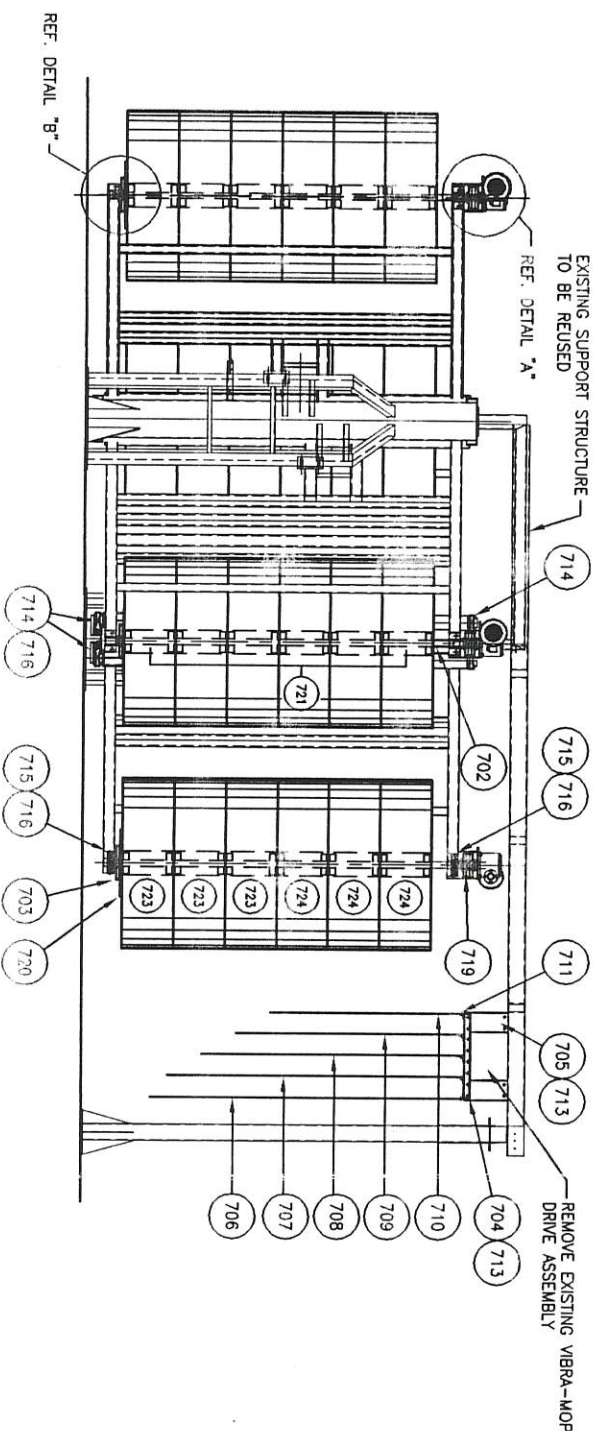








PLAN VIEW



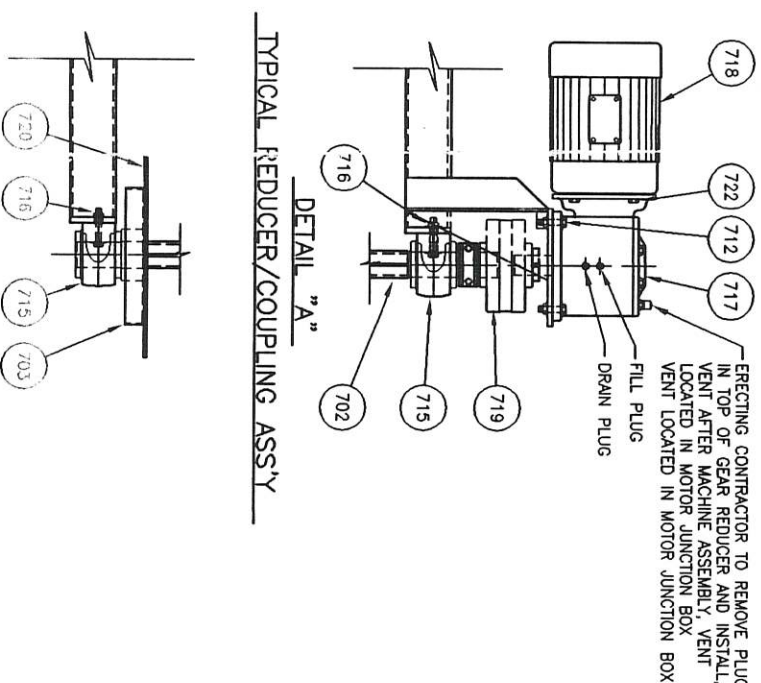
ELEVATION

DO NOT SCALE DRAWING

NOTE: THIS DRAWING IN DESIGN IS THE PROPERTY OF THE ROSS AND WHITE COMPANY AND MUST NOT BE COPIED OR USED EITHER IN WHOLE OR IN PART FOR ANY OTHER PROJECT WITHOUT THE ROSS AND WHITE COMPANY WITHOUT SAID COMPANY'S EXPRESSED WRITTEN CONSENT. NO PART OF THIS DESIGN IS TO BE REPRODUCED OR INVENTION OR DESIGN ARE RESERVED.

LIST OF EQUIPMENT BY ROSS & WHITE CO.		
ITEM	QUAN.	PART NO. DESCRIPTION
* 700	1	FAB-88-7B-YLF BRUSH YOKE ASSEMBLY (RRP ONLY)
* 701	1	FAB-88-7B-YLR BRUSH YOKE ASSEMBLY (LRB ONLY)
* 702	4	FAB-88-7C-S-RC BRUSH SHAFT 2-3/8" W/REC. KEYWAY
703	4	R&M-96-28 BEARING GUARD
* 704	1	FAB-9928-SX-1 MOP SUPPORT FRAME
* 705	4	FAB-9928-SX-2 HANGER BRACKET
706	11	ZZZ-13X108RM ROPF MOP - DZITE 1'-1" x 9'-0" LG.
707	11	ZZZ-13X102RM ROPF MOP - DZITE 1'-1" x 8'-6" LG.
708	11	ZZZ-13X90RM ROPF MOP - DZITE 1'-1" x 7'-6" LG.
709	11	ZZZ-13X78RM ROPF MOP - DZITE 1'-1" x 6'-6" LG.
710	11	ZZZ-13X66RM ROPF MOP - DZITE 1'-1" x 5'-6" LG.
711	60	FAS-HCS38X114A BOLT 3/8-16X1-1/4" LG. W/FV, LV & NUT
712	8	FAS-HCS12X2A BOLT 1/2-13X2" LG. W/FV, LV & NUT
713	16	FAS-HCS38X1A BOLT 3/8-16X1" LG. W/FV, LV, & NUT
714	4	DD-PB-225-SXR BEARING 2-1/4" B. PILLLOW BLOCK
715	8	DD-PB-175-SXR BEARING 1-3/4" B. PILLLOW BLOCK
716	32	FAS-HCS58X3A BOLT 5/8-11X3" LG. W/FV, LV, & NUT
717	2	WIN-7MCV-18-1 GEAR REDUCER 18:1
718	2	LIN-SHP-184TC MOTOR 5 HP, TEFC, 1800 RPM
719	4	DD-8HF-175-175 COUPLING 8HF POLY-DISC W/BUSHINGS
720	4	GDD-88-F-24 ANTI-WRAP DISC 24" DIA.
721	48	IBC-3006767-10 BRUSH MOUNTING FLANGE 2-1/4" BORE
722	8	FAS-HCS12X114 1/2"-13X1-1/4" LG. HEX. HD. BOLT
723	12	IBC-18X60EHD BRUSH SECTION 18"x60" HD CIRCULEEN RED
724	12	IBC-18X60HD BRUSH SECTION 18"x60" HD POLY-LITE RED

QUANTITIES SHOWN FOR 1 WASH LANE. (3) LANES REQUIRED  
\* - ITEMS TO BE HOT DIPPED GALVANIZED AFTER FABRICATION



TYPICAL REDUCER/COUPLING ASS'Y

DETAIL "B"

BOTTOM BRUSH SHAFT BEARING ASSEMBLY

REV	REVISION	DATE	REV	REVISION	DATE
E			A	GENERAL	1/10/00
F			B		
G			C		
H			D		
I					
J					
K					

**ROSS**  
ROSS & WHITE COMPANY  
1050 ALEXANDER L. COURT  
FARMINGTON, CT 06030  
PHONE: (860) 316-3800  
FAX: (860) 316-3880

BAR-1055-0M BRUSH MACHINE MODIFICATIONS  
FOR METRO AREA TRANSIT

NE

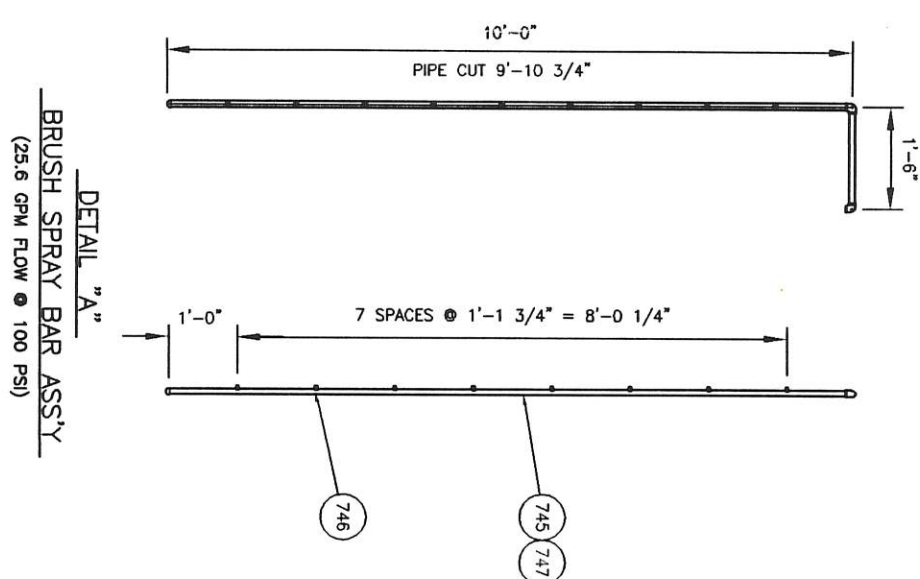
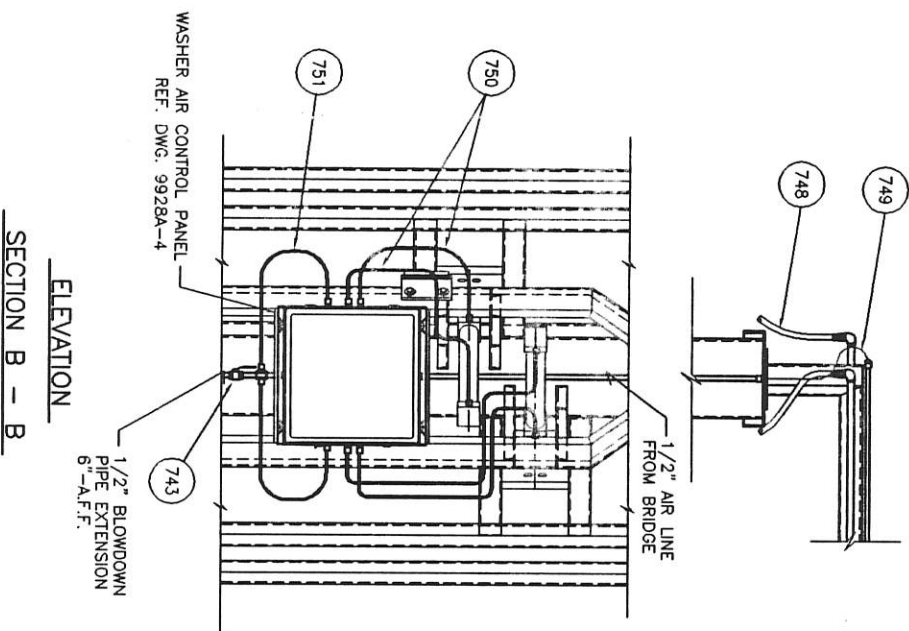
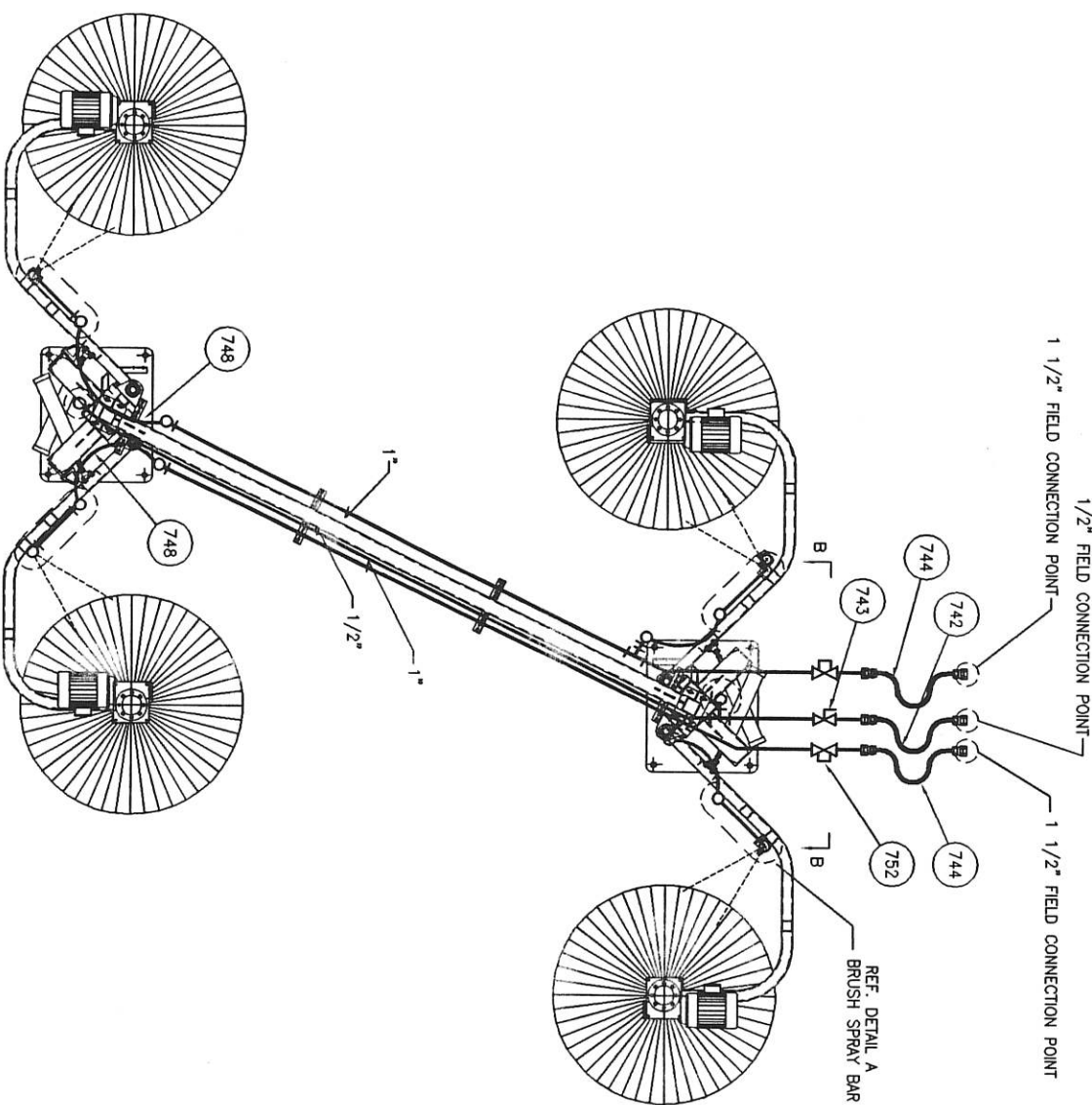
APPROVED:

9928A-7



LIST OF EQUIPMENT BY ROSS & WHITE CO.		
ITEM	QUAN.	PART NO. DESCRIPTION
742	1	HDS-12X72PLA 1/2" X 6'-0" LG. HOSE ASSEMBLY
743	3	VAL-171NBV12 VALVE 1/2" BALL VALPRESS
744	2	HDS-114X72PLA 1 1/4" X 6'-0" LG. HOSE ASSEMBLY
745	4	COL-GTCL BRUSH SPRAY PIPE ASSEMBLY 1'
746	32	SPR-1/4P3520 SPRAY NOZZLE 1/4HP3520, BRASS
747	8	FAS-LB1 U-BOLT 1" W/L.H., PLATE & NUTS
748	4	HDS-1X72PLA 1" X 6'-0" LG. HOSE ASSEMBLY
749	2	HDS-12X36PLA 1/2" X 3'-0" LG. AIR HOSE ASSEMBLY
750	8	HDS-38X48ASY 3/8" X 4'-0" LG. AIR HOSE ASSEMBLY
751	4	HDS-38X36ASY 3/8" X 3'-0" LG. AIR HOSE ASSEMBLY
752	2	IMP-CEV150 VALVE SOLENOID 1 1/2", CEV. 115VAC.

QUANTITIES SHOWN FOR (1) WASH LANE, (3) LANES REQUIRED



DO NOT SCALE DRAWING

NOTE: THIS DRAWING IN DESIGN IS THE PROPERTY OF THE ROSS AND WHITE COMPANY AND MUST NOT BE COPIED OR USED EITHER IN WHOLE OR IN PART FOR ANY WORK OTHER THAN THAT FOR WHICH IT WAS DESIGNED. THE ROSS AND WHITE COMPANY'S EXPRESS PERMISSION AND ALL RIGHTS OF INVENTION OR DESIGN ARE RESERVED.

REV	REVISION	DATE	REV	REVISION	DATE
E			A		
F			B		
G			C		
H			D		
I					
J					
K					

1000 ALEXANDER COURT  
ROSS & WHITE COMPANY  
Phone: (815) 315-3500  
Fax: (815) 315-3585

BAR-1055-0M BRUSH MACHINE PIPING SCHEMATIC  
FOR METRO AREA TRANSIT

DATE: 12/14/99  
SCALE: 1/2" = 1'-0"  
APPROVED: [Signature]  
CHECKED BY: [Signature]

9928A-7A



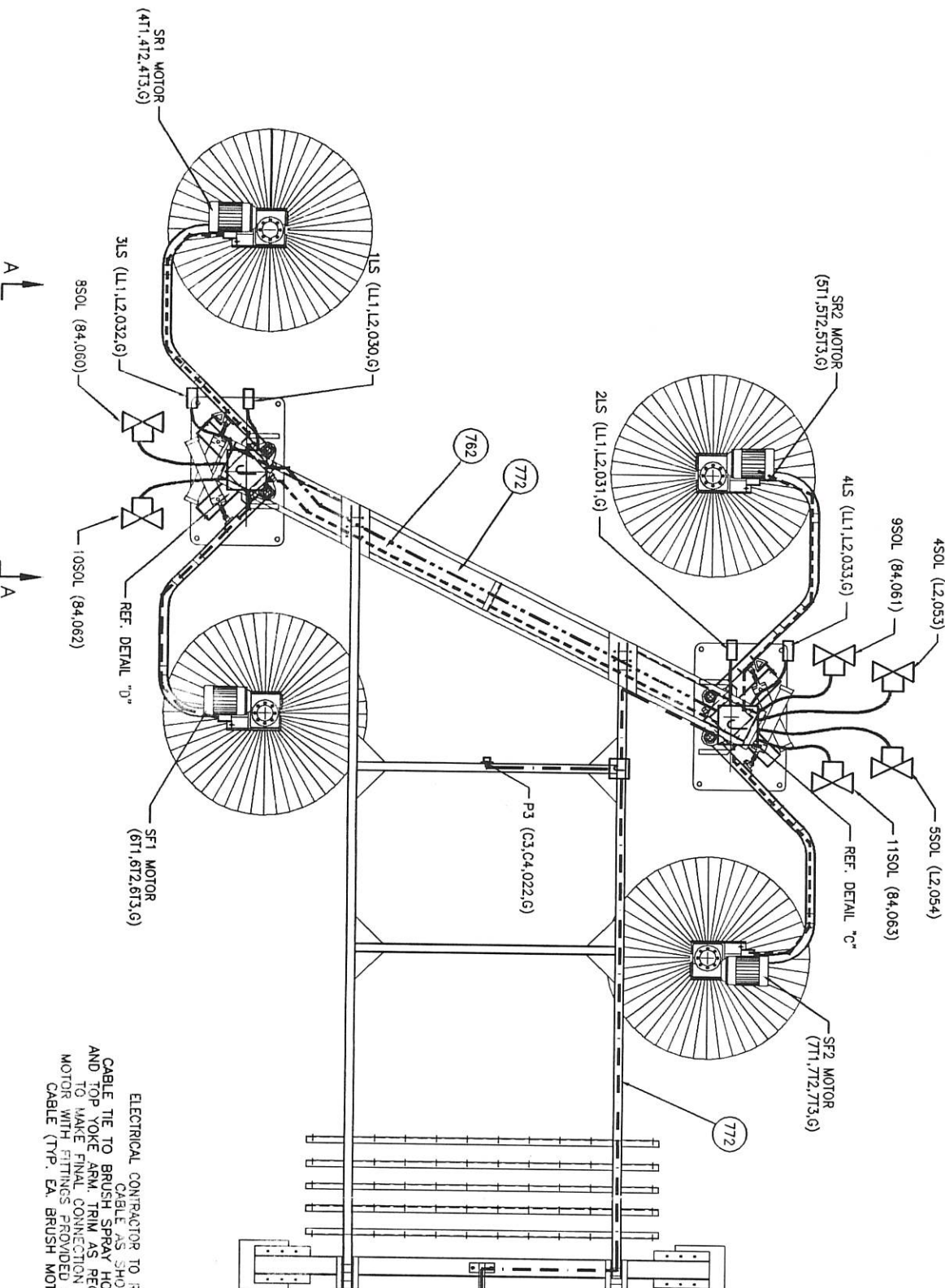
LIST OF EQUIPMENT BY ROSS & WHITE CO.

ITEM	QUAN.	PART NO.	DESCRIPTION
760	2	HIF-14107JFGAR	JUNCTION BOX 14"x10", NEMA 4X, FIBERGLASS
761	2	HIF-A12P10 SUB	PANEL 12"x10"
762	60'	GCS-12/4SD	CORD #12 AWG/4 CONDUCTOR TYPE SED BLACK
763	2	RAC-9604	PVC JUNCTION BOX 5'X5'X2'
765	50	T&B-TY527M	CABLE TIE 12" lg.
766	50	T&B-TY529M	CABLE TIE 30" lg.
767	54	AB-1492-CA1	TERMINALS #22-#8 WIRE
768	4	AB-1492-N16	TERMINAL END BARRIERS
769	8	AB-1942-N2	TERMINAL RETAINING CLIPS
770	4	T&B-2672	CORD GRIP 1/2" NPT, 0.20-0.40
771	11	T&B-LT950P	SEALTITE CONNECTOR 1/2" 90°, PLASTIC
772	60'	GES-14/4SD	CORD 14/4 14AWG, 4 CONDUCTOR

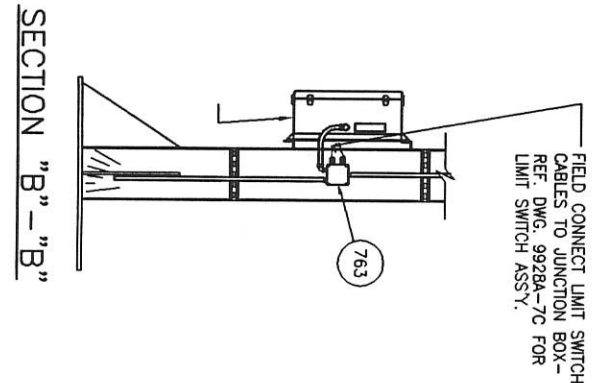
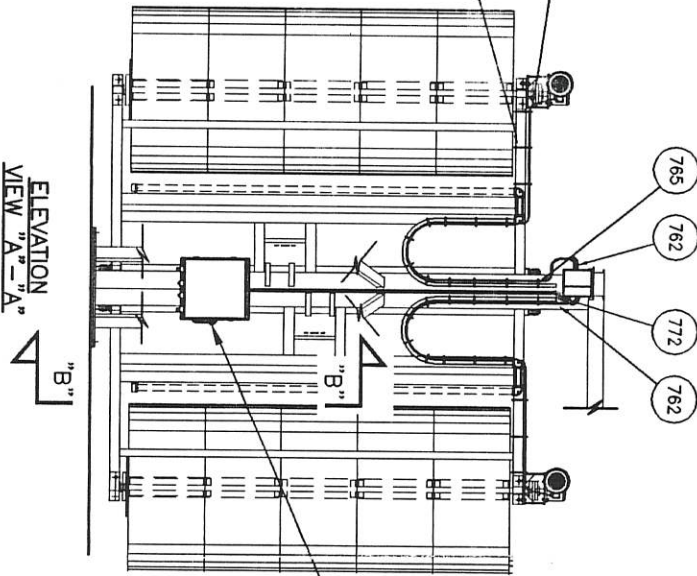
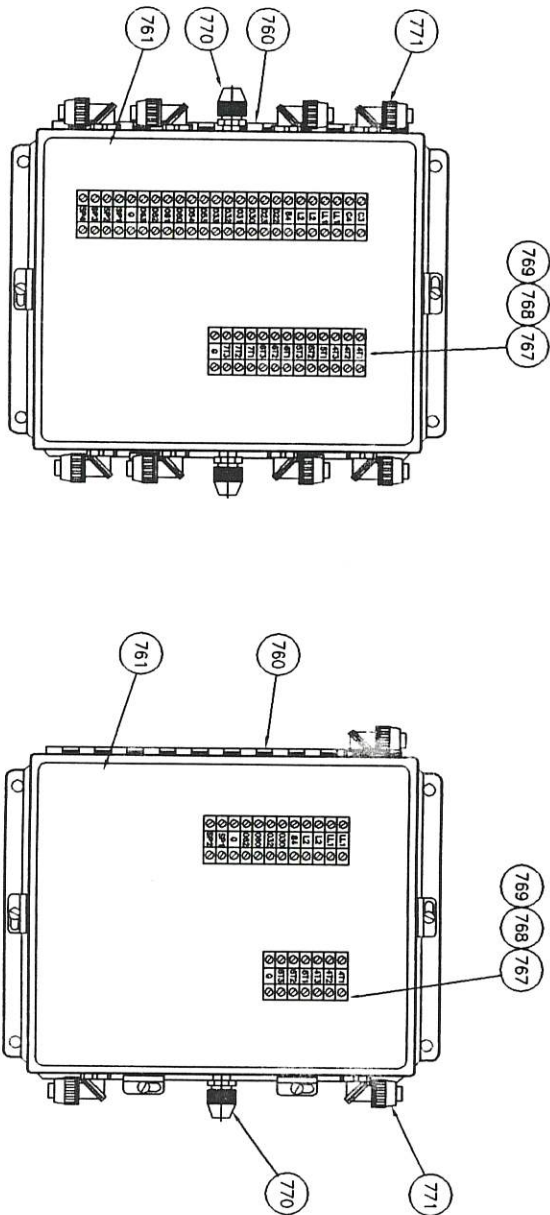
QUANTITIES SHOWN FOR 1-LANE, 3-LANES REQUIRED

LEGEND

- 24WDC CONDUIT
- 16 24V SEALTITE
- 16 24V CONDUIT
- 36 CONDUIT
- [J] - JUNCTION BOX
- [X] - SOLENOID VALVE



ELECTRICAL COMPARTMENT TO RUN CABLE AS SHOWN. CABLE TIE TO BRUSH SPRAY HOSE AND TOP YOKE ARM. TRIM AS REQD. TO MAKE FINAL CONNECTION TO MOTOR WITH FITTINGS PROVIDED ON CABLE (TYP. EA. BRUSH MOTOR)



TYPICAL COLUMN CONDUIT CONNECTIONS

REV	REVISION	DATE	REV	REVISION	DATE
E	GENERAL	1/10/00	A	GENERAL	1/10/00
F			B		
G			C		
H			D		
I					
J					
K					

DO NOT SCALE DRAWING

NOTE: THIS DRAWING IN DESIGN IS THE PROPERTY OF THE ROSS AND WHITE COMPANY. ANY REVISIONS TO THIS DRAWING SHALL BE MADE DIRECTLY OR INDIRECTLY FOR ANY WORK OTHER THAN THAT OF THE ROSS AND WHITE COMPANY WITHOUT THE ROSS AND WHITE COMPANY'S EXPRESSED DESIGN ARE RESERVED.

DESIGNED BY: JPH  
DATE: 12/15/99  
SCALE: 1/2"=1'  
CHECKED BY: [blank]  
DATE: [blank]

ROSS & WHITE COMPANY

1080 ALEXANDER COURT  
FARMINGTON, CT 06030  
PHONE: (860) 316-3900  
FAX: (860) 316-3985

BAR-1055-0M BRUSH MACHINE WIRING SCHEMATIC  
FOR METRO AREA TRANSIT

APPROVED: [signature]  
NE.

9928A-7B

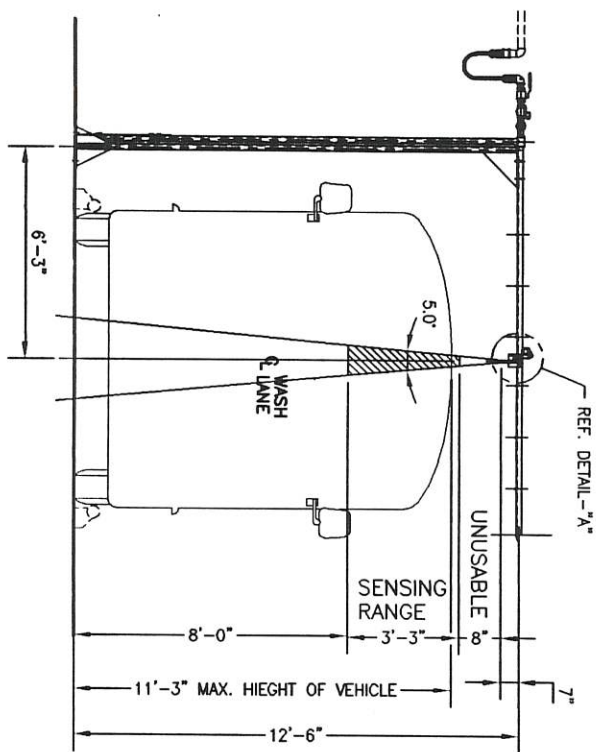




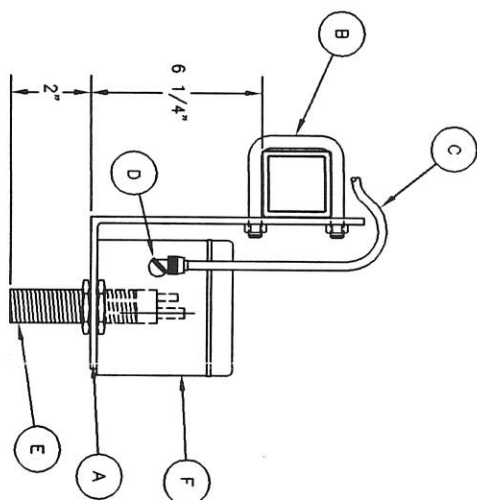








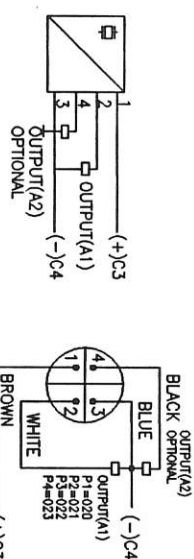
VIEW "A"-  
"A"  
SENSOR RANGE



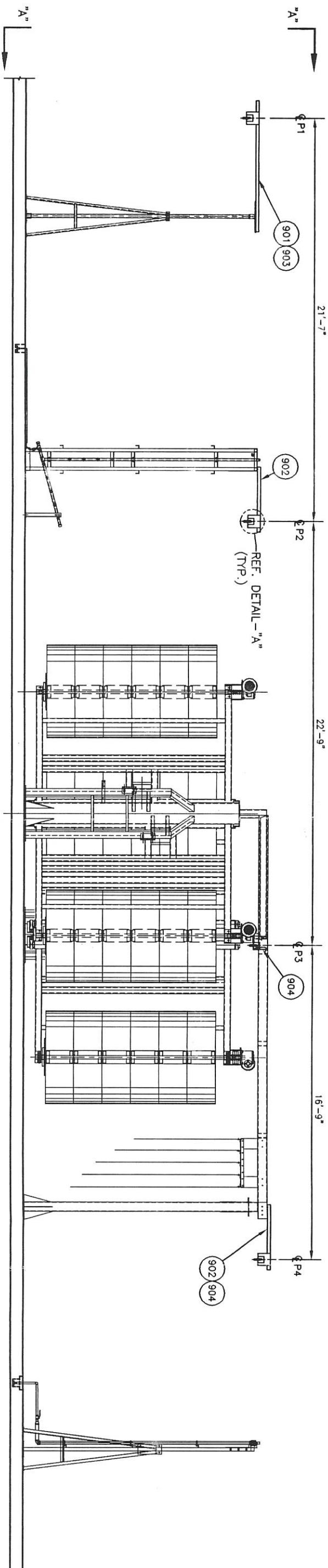
ELEVATION  
DETAIL "A"  
ITEM #900

LIST OF EQUIPMENT BY ROSS & WHITE CO.		
ITEM	QUAN.	PART NO. DESCRIPTION
900	4	R&W-PREDEC PRESENCE DETECTOR ASSEMBLY
A	1	FAB-99-28-1 GALVANIZED MOUNTING BRACKET
B	2	FAS-SB-2 2" SQUARE BOLTS
C	1'	PEP-VI-G-SM-PVC 16' SENSOR CORD
D	1	T&B-2920NM CORD GRIP 1/2" .25 X .375 PLASTIC
E	1	PEP-UC1000-30GM-EE-VI ULTRASONIC PROXIMITY SENSOR
F	1	RAC-9601 4" SQ. FIBERGLASS JUNCTION BOX
901	1	FAB-94-6F-1 PREWET SENSOR TUBE
902	2	FAB-96-6F-2 SCRUBJET AND BRUSH MACHINE SENSOR TUBE
903	1	FAB-96-E PREWET PROXIMITY SWITCH MOUNT
904	6	FAS-HCS12X5A BOLT 1/2-13 X 5" W/F. W. L. W. & NUT

\* - ITEMS TO BE HOT DIPPED GALVANIZED AFTER FABRICATION  
QUANTITIES SHOWN FOR (1) WASH LANE, (3) LANES REQUIRED



DETAIL "B"  
PRESENCE DETECTOR WIRING DIAGRAM



ELEVATION  
PRESENCE DETECTOR ASSEMBLY

DO NOT SCALE DRAWING  
NOTE: THIS DRAWING IN DESIGN IS THE  
PROPERTY OF THE ROSS AND WHITE COMPANY  
AND IS NOT TO BE REPRODUCED OR COPIED  
DIRECTLY OR INDIRECTLY FOR ANY OTHER  
PURPOSE WITHOUT THE WRITTEN PERMISSION  
OF THE ROSS AND WHITE COMPANY. ALL RIGHTS  
RESERVED.

REV	REVISION	DATE	REV	REVISION	DATE
A	GENERAL	1/10/99			
B					
C					
D					
E					
F					
G					
H					
I					
J					
K					

DESIGNED BY: TMMK  
DATE: 12/13/99  
SCALE: 3/8"=1'-0"

APPROVED: OMAHA

CHECKED BY: DET. CHECKED

ROSS & WHITE COMPANY  
1000 ALEXANDER COURT  
SANDY, ILLINOIS 60070  
PHONE: (847) 505-5800  
FAX: (847) 505-5800

PRESENCE DETECTOR SYSTEM  
FOR METRO AREA TRANSIT

9928A-9